








pH Selection Guide

		pH 1	pH 2	pH 3	pH 5	pH 6
						
	Spare Sensor Pt. No.	32011001	32011002	32011003	3201115	3201116
	Sensor Bundle Pt. No.	32011005	32011006	32011007	3201117	3201118
Applications	Potable Water	X	✓	X	✓	✓
	Waste Water	X	X	✓	✓	X
	Pool / Spa	✓	X	X	X	X
	Process	X	✓	✓	✓	✓
	Boiler Feedwater	X	X	✓	X	✓
Mounting Options	Single Open Flow Cell	✓	✓	✓	✓	✓
	Dual Open Flow Cell	✓	✓	✓	✓	✓
	Triple Open Flow Cell	✓	✓	✓	✓	✓
	Closed Flow Cell	X	✓	✓	✓	✓
	Autoflush (Flow Cell)	X	✓	✓	✓	✓
	Autoclean Immersion (Dip)	X	X	✓	X	X
	Autoclean Immersion (In Pipe)	X	X	✓	X	X
	At Line Tee	X	✓	✓	✓	✓
	Handrail	X	X	✓	✓	✓
	Welding Stub	X	✓	✓	✓	✓
	Connector	BNC Connector	Built-in cable	Built-in cable	Built-in cable	Built-in cable
	Standard Cable Length	1m	6m	6m	6m	6m
Submersible*	X	X	✓	✓	✓	
Inbuilt Temperature	X	✓	✓	✓	✓	
Max. Temperature	80°C	80°C	80°C	100°C	100°C	
Automatic Temp. Compensation	X	✓	✓	✓	✓	
Conductivity	>100 µS/cm	>100 µS/cm	>100 µS/cm	>100 µS/cm	<300 µS/cm	
Junction	Single	Single	Double	Double	Double	
Life Expectancy (Application Dependent)	12-18 months	12-18 months	12-18 months	3 years	18 months	
Back / Front Thread	¾" NPT (Back Only)	¾" NPT (Front & Back)	¾" NPT (Front & Back)	¾" NPT (Front & Back)	¾" NPT (Front & Back)	

* It is recommended that the probe be submerged on the end of a pole with the cable protected by running inside the pole.

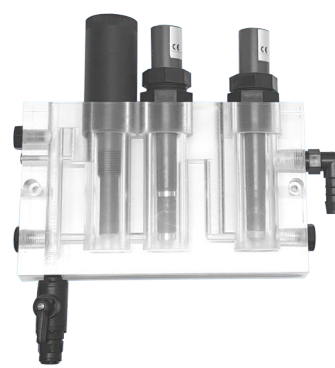
Mounting Options



Single Open Flow Cell
PN:32100001



Double Open Flow Cell
PN:32100002



Triple Open Flow Cell
PN:32100007



Single Closed Flow Cell
PN:32100010



At Line Tee (screw in)
PN:32100102

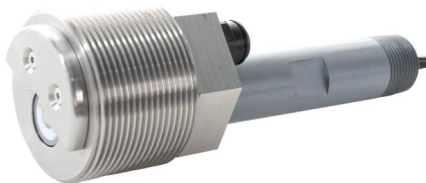


At Line Tee (quick connect)
PN:32100103



Welding Stub (screw in)
PN:32100106

Autoclean Options



Autoclean Insertion
PN:36000031



Autoflush Cell
PN:36500001



Autoclean Immersion
PN:36000030